

Great Is the Love/ Hay Gran Amor

Edition # 70701-Z3

SOLO INSTRUMENT

Jaime Cortez
Arranged by Rick Modlin

INTRO Gently (♩ = ca. 88)

(8va ad lib.)

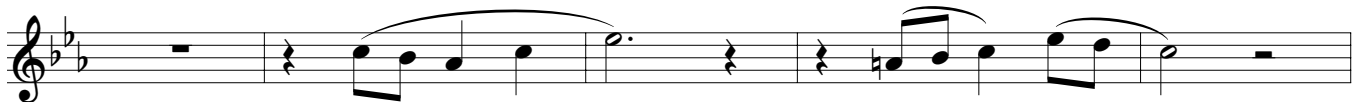


REFRAIN/ESTRIBILLO

9



VERSE/ESTROFA 1



REFRAIN/ESTRIBILLO



VERSE/ESTROFA 2



REFRAIN/ESTRIBILLO



GREAT IS THE LOVE/HAY GRAN AMOR (Solo Instrument), pg. 2 of 2

VERSE/ESTROFA 3

Musical notation for Verse/Estrofa 3, consisting of two staves of music in a key signature of two flats. The first staff begins with a whole rest, followed by a quarter rest, then a series of eighth and quarter notes with slurs. The second staff continues with similar rhythmic patterns and slurs.

REFRAIN/ESTRIBILLO

Musical notation for Refrain/Estribillo, consisting of one staff of music in a key signature of two flats. It features a series of quarter and eighth notes with slurs, ending with a quarter rest.

VERSE/ESTROFA 4

Musical notation for Verse/Estrofa 4, consisting of two staves of music in a key signature of two flats. The first staff starts with a whole rest, followed by a quarter rest and then eighth and quarter notes with slurs. The second staff continues with similar rhythmic patterns and slurs.

REFRAIN/ESTRIBILLO

Musical notation for Refrain/Estribillo, consisting of one staff of music in a key signature of two flats. It features a series of quarter and eighth notes with slurs, ending with a quarter rest.

VERSE/ESTROFA 5

Musical notation for Verse/Estrofa 5, consisting of two staves of music in a key signature of two flats. The first staff starts with a whole rest, followed by a quarter rest and then eighth and quarter notes with slurs. The second staff continues with similar rhythmic patterns and slurs.

REFRAIN/ESTRIBILLO

Musical notation for Refrain/Estribillo, consisting of one staff of music in a key signature of two flats. It features a series of quarter and eighth notes with slurs, ending with a quarter rest.