

HOLY

(♩ = ca. 118)

Melody

Keyboard

F/C C7 B♭/C F Gm7/F F C7 F F/A

1. Ho - ly, ho - ly, ho - ly, ho - ly, ho - ly
 2. Bless - ed is he who comes in the name _____ of _____ the

B♭maj7 Gm6/B♭ Am7 F/A G9 G6 G7 C7 F F/A B♭maj7 Gm6/B♭ Am7 F/A

1. Lord God of _____ hosts. Heav - en and earth are
 2. Lord God of _____ hosts. Ho - san - na

F Gm7/F F A7sus4/G A7/G Dm7 B♭/F F/C C7 B♭/F F

1. filled with your glo - ry. Ho - san - na in _____ the high - est.
 2. in _____ the high - est. Ho - san - na in _____ the high - est.

Music: Grayson Warren Brown, b. 1948; keyboard acc. by Larry Adams, © 1979, 1994, Grayson Warren Brown. Published by OCP Publications. All rights reserved.

HOLY

(♩ = ca. 118)

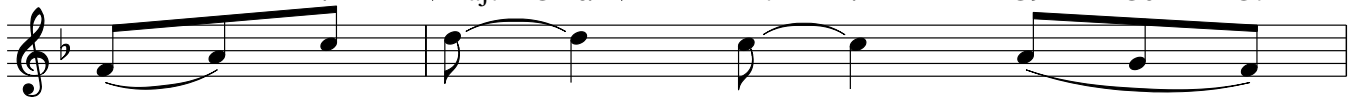
Capo 3: (D/A) (A7) (G/A) (D)
F/C C7 B♭/C F

(Em7/D)(D) (A7) (D)
Gm7/F F C7 F



1. Ho - ly, ho - ly, ho - ly, ho - ly,
2. Bless - ed is he who comes in the name _____

(D/F#) (Gmaj7) (Em6/G) (F#m7) (D/F#) (E9) (E6) (E7)
F/A B♭maj7 Gm6/B♭ Am7 F/A G9 G6 G7



1. ho - ly the Lord _____ God _____ of _____
2. of _____ the Lord _____ God _____ of _____

(A7) (D) (D/F#) (Gmaj7) (Em6/G) (F#m7) (D/F#) (D) (Em7/D) (D)
C7 F F/A B♭maj7 Gm6/B♭ Am7 F/A F Gm7/F F



1. hosts. Heav - en and earth _____ are _____ filled with your
2. hosts. Ho - san - na _____ in _____ the

(F#7sus4/E) (F#7/E) (Bm7) (G/D) (D/A) (A7) (G/D) (D)
A7sus4/G A7/G Dm7 B♭/F F/C C7 B♭/F F



1. glo - ry. Ho - san - na in _____ the high - est.
2. high - est. Ho - san - na in _____ the high - est.

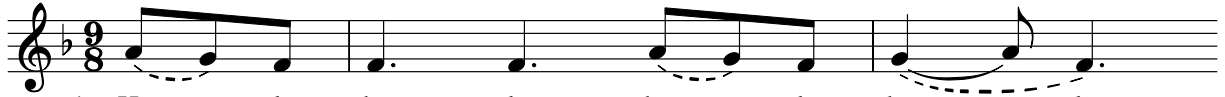
Music: Grayson Warren Brown, b. 1948; guitar acc. by Larry Adams, © 1979, 1994, Grayson Warren Brown. Published by OCP Publications. All rights reserved.

HOLY

(♩ = ca. 118)

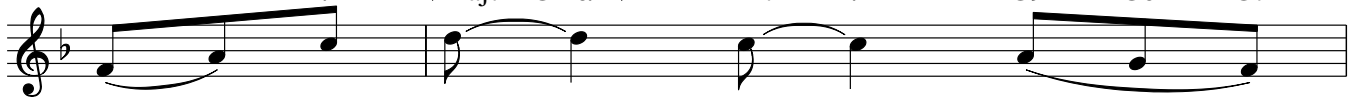
Capo 3: (D/A) (A7) (G/A) (D)
F/C C7 B♭/C F

(Em7/D)(D) (A7) (D)
Gm7/F F C7 F



1. Ho - ly, ho - ly, ho - ly, ho - ly,
2. Bless - ed is he who comes in the name _____

(D/F#) (Gmaj7) (Em6/G) (F#m7) (D/F#) (E9) (E6) (E7)
F/A B♭maj7 Gm6/B♭ Am7 F/A G9 G6 G7



1. ho - ly the Lord _____ God _____ of _____
2. of _____ the Lord _____ God _____ of _____

(A7) (D) (D/F#) (Gmaj7) (Em6/G) (F#m7) (D/F#) (D) (Em7/D) (D)
C7 F F/A B♭maj7 Gm6/B♭ Am7 F/A F Gm7/F F



1. hosts. Heav - en and earth _____ are _____ filled with your
2. hosts. Ho - san - na _____ in _____ the

(F#7sus4/E) (F#7/E) (Bm7) (G/D) (D/A) (A7) (G/D) (D)
A7sus4/G A7/G Dm7 B♭/F F/C C7 B♭/F F



1. glo - ry. Ho - san - na in _____ the high - est.
2. high - est. Ho - san - na in _____ the high - est.

Music: Grayson Warren Brown, b. 1948; guitar acc. by Larry Adams, © 1979, 1994, Grayson Warren Brown. Published by OCP Publications. All rights reserved.