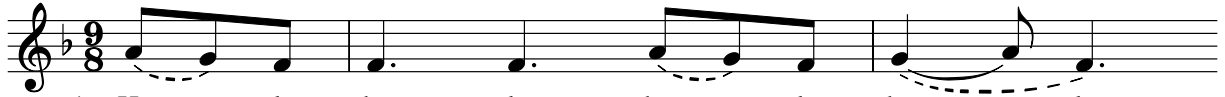


# HOLY

(♩ = ca. 118)

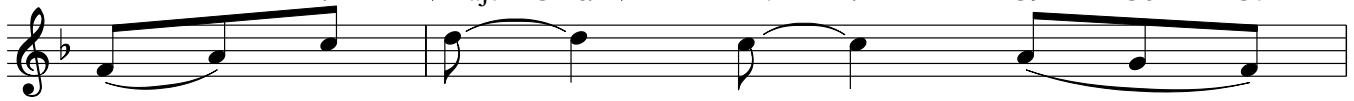
Capo 3: (D/A) (A7) (G/A) (D)  
F/C C7 B♭/C F

(Em7/D)(D) (A7) (D)  
Gm7/F F C7 F



1. Ho - ly, ho - ly, ho - ly, ho - ly,  
2. Bless - ed is he who comes in the name \_\_\_\_\_

(D/F#) (Gmaj7) (Em6/G) (F#m7) (D/F#) (E9) (E6) (E7)  
F/A B♭maj7 Gm6/B♭ Am7 F/A G9 G6 G7



1. ho - ly the Lord \_\_\_\_\_ God \_\_\_\_\_ of \_\_\_\_\_  
2. of \_\_\_\_\_ the Lord \_\_\_\_\_ God \_\_\_\_\_ of \_\_\_\_\_

(A7) (D) (D/F#) (Gmaj7) (Em6/G) (F#m7) (D/F#) (D) (Em7/D) (D)  
C7 F F/A B♭maj7 Gm6/B♭ Am7 F/A F Gm7/F F



1. hosts. Heav - en and earth \_\_\_\_\_ are \_\_\_\_\_ filled with your  
2. hosts. Ho - san - na \_\_\_\_\_ in \_\_\_\_\_ the

(F#7sus4/E) (F#7/E) (Bm7) (G/D) (D/A) (A7) (G/D) (D)  
A7sus4/G A7/G Dm7 B♭/F F/C C7 B♭/F F



1. glo - ry. Ho - san - na in \_\_\_\_\_ the high - est.  
2. high - est. Ho - san - na in \_\_\_\_\_ the high - est.

Music: Grayson Warren Brown, b. 1948; guitar acc. by Larry Adams, © 1979, 1994, Grayson Warren Brown. Published by OCP Publications. All rights reserved.