

# WHAT IS THIS PLACE

TRUMPET in B $\flat$ : Use with keyboard edition only.

VERSES 1, 2: Tacet

VERSE 3

Musical notation for Trumpet in B $\flat$ , keyboard edition only. The notation is in 3/2 time and consists of two staves. The first staff begins with a treble clef and a key signature of one flat. It contains a triplet of eighth notes on the first measure, followed by quarter notes and eighth notes. The second staff continues the melody with quarter notes and a triplet of eighth notes on the third measure. The piece concludes with a double bar line.

Music: KOMT NU MET ZANG; trad. Dutch Hymn; Valerius' *Nederlandsche Gedenckclank*, Haarlem, 1626; arr. by Tom Conry, b. 1951, © 1967, 1984, Gooi en Sticht, bv., Baarn, The Netherlands. All rights reserved. Exclusive agent for English-language countries: OCP.

---

TRUMPET in B $\flat$ : Use with guitar edition only.

VERSES 1, 2: Tacet

VERSE 3

Musical notation for Trumpet in B $\flat$ , guitar edition only. The notation is in 3/2 time and consists of two staves. The first staff begins with a treble clef and a key signature of one flat. It contains a triplet of eighth notes on the first measure, followed by quarter notes and eighth notes. The second staff continues the melody with quarter notes and a triplet of eighth notes on the third measure. The piece concludes with a double bar line.

Music: KOMT NU MET ZANG; trad. Dutch Hymn; Valerius' *Nederlandsche Gedenckclank*, Haarlem, 1626; arr. by Tom Conry, b. 1951, © 1967, 1984, Gooi en Sticht, bv., Baarn, The Netherlands. All rights reserved. Exclusive agent for English-language countries: OCP.

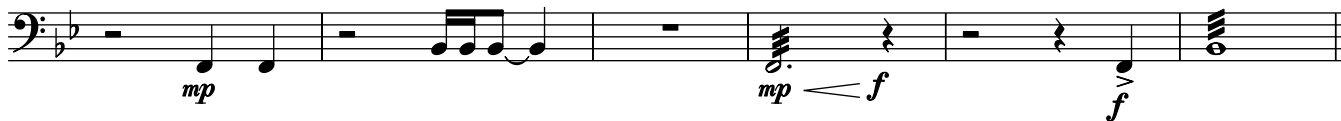
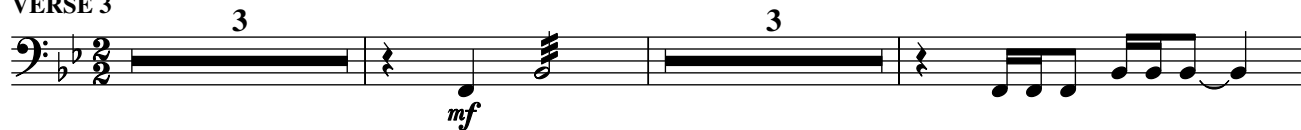
WHAT IS THIS PLACE (TIMPANI: keyboard/guitar edition)

TIMPANI: Use with keyboard edition only.



VERSES 1, 2: Tacet

VERSE 3



Music: KOMT NU MET ZANG; trad. Dutch Hymn; Valerius' *Nederlandsche Gedenckclank*, Haarlem, 1626; arr. by Tom Conry, b. 1951, © 1967, 1984, Gooi en Sticht, bv., Baarn, The Netherlands. All rights reserved. Exclusive agent for English-language countries: OCP.

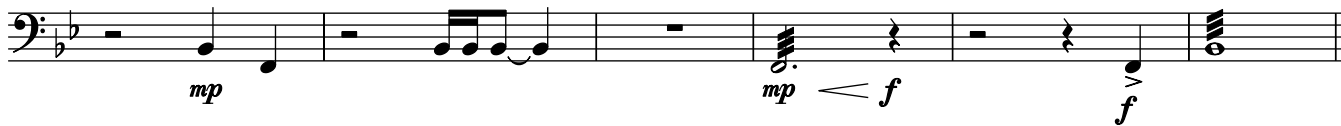
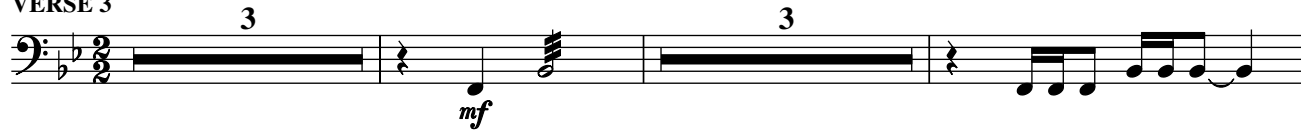


TIMPANI: Use with guitar edition only.



VERSES 1, 2: Tacet

VERSE 3



Music: KOMT NU MET ZANG; trad. Dutch Hymn; Valerius' *Nederlandsche Gedenckclank*, Haarlem, 1626; arr. by Tom Conry, b. 1951, © 1967, 1984, Gooi en Sticht, bv., Baarn, The Netherlands. All rights reserved. Exclusive agent for English-language countries: OCP.