

COME, LORD JESUS

SOLO INSTRUMENT

INTRO (♩ = ca. 84-114*)

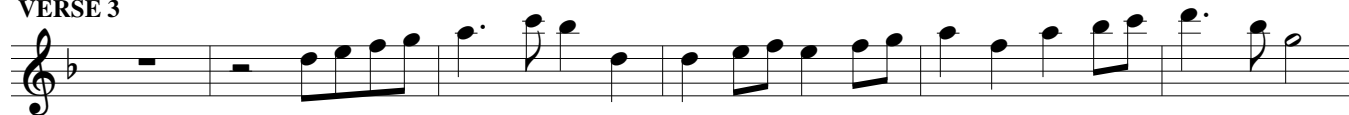
VERSE 1



VERSE 2



VERSE 3



*The tempo should be determined by the setting in which the piece is used—thoughtfully and gently (*ca. 84*) for Evening Prayer, or more energetically (*ca. 114*) as a gathering or closing song for Eucharist.

Music: M.D. Ridge, © 1997, M.D. Ridge. Published by OCP. All rights reserved.

COME, LORD JESUS (SOLO INSTRUMENT in B \flat)

SOLO INSTRUMENT in B \flat

INTRO (♩ = ca. 84-114*)

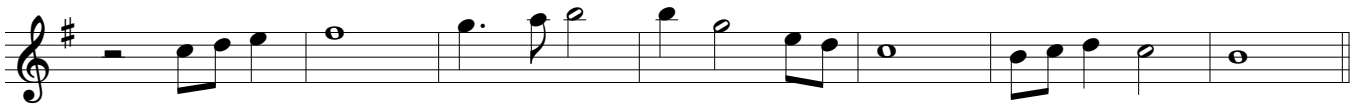
VERSE 1

16



VERSE 2

2



VERSE 3



*The tempo should be determined by the setting in which the piece is used—thoughtfully and gently (*ca. 84*) for Evening Prayer, or more energetically (*ca. 114*) as a gathering or closing song for Eucharist.

Music: M.D. Ridge, © 1997, M.D. Ridge. Published by OCP. All rights reserved.