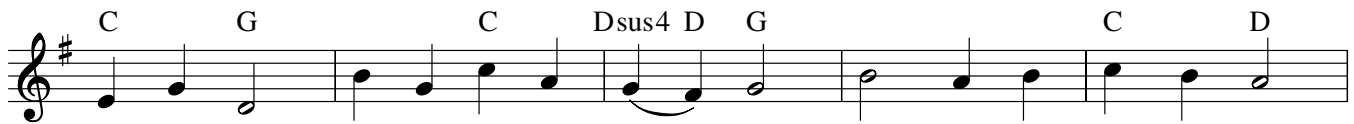


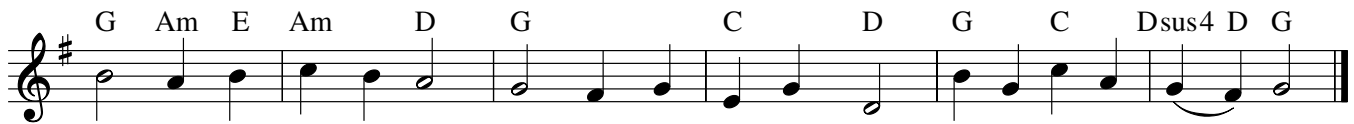
COME, CHRISTIANS, JOIN TO SING



1. Come, Chris-tians, join to sing Al - le - lu - ia! A - men! Loud praise to
2. Come, lift your hearts on high; Al - le - lu - ia! A - men! Let prais-es
3. Praise yet our Christ a - gain; Al - le - lu - ia! A - men! Life shall not



1. Christ our King; Al - le - lu - ia! A - men! Let all with heart and voice,
2. fill the sky; Al - le - lu - ia! A - men! He is our guide and friend;
3. end the strain; Al - le - lu - ia! A - men! On heav-en's joy - ful shore



1. Be - fore his throne re-joice; Praise is his gra-cious choice: Al - le - lu - ia! A - men!
2. Our cry he will at-tend; His love shall nev - er end: Al - le - lu - ia! A - men!
3. His good-ness we'll a-dore, Sing - ing for - ev - er - more: Al - le - lu - ia! A - men!

Note: When guitar and keyboard play together, keyboardists should improvise using the guitar chords above the melody.

Text: 66 66 D; Christian Henry Bateman, 1813–1889, alt.

Music: MADRID; anon. melody, Philadelphia, 1826; guitar acc. © 1995, 1997, OCP. All rights reserved.