

ANGELS FROM THE REALMS OF GLORY

Ab Db Ab Eb7 Ab

1. An - gels, from the realms of glo - ry, Wing your flight o'er all the earth;
 2. Shep - herds, in the fields a - bid - ing, Watch - ing o'er your flocks by night,
 3. Sag - es, leave your con - tem - pla - tions, Bright - er vi - sions beam a - far;
 4. Though an in - fant now we view him, He shall fill his Fa - ther's throne,
 5. All cre - a - tion, join in prais - ing God, the Fa - ther, Spir - it, Son,

Fm C7 Fm Eb/Bb Bb7 Eb

1. Ye who sang cre - a - tion's sto - ry, Now pro - claim Mes - si - ah's birth:
 2. God on earth is now re - sid - ing; Yon - der shines the in - fant light:
 3. Seek the great De - sire of Na - tions, Ye have seen his na - tal star:
 4. Gath - er all the na - tions to him; Ev - 'ry knee shall then bow down:
 5. Ev - er - more your voic - es rais - ing, To the e - ter - nal Three - in - One:

[Eb] Ab Db Bbm Eb sus4 Eb Ab

1-5. Come and wor - ship, come and wor - ship, Wor - ship Christ, the new - born King.

Note: When guitar and keyboard play together, keyboardists should improvise using the guitar chords above the melody.

Text: 87 87 87; verses 1-3, James Montgomery, 1771-1854; verse 4, *Christmas Box*, 1825; verse 5, *Salisbury Hymn Book*, 1857.
 Music: REGENT SQUARE; Henry T. Smart, 1813-1879.

ANGELS FROM THE REALMS OF GLORY

Capo 1: (G)

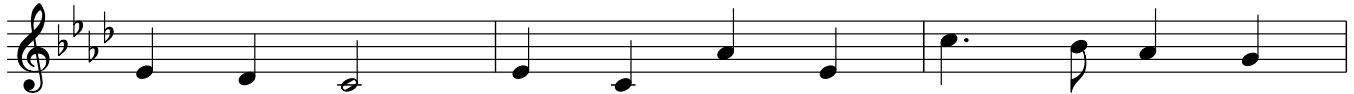


1. An - gels, from the realms of glo - ry, Wing your flight o'er
2. Shep - herds, in the fields a - bid - ing, Watch - ing o'er your
3. Sag - es, leave your con - tem - pla - tions, Bright - er vi - sions
4. Though an in - fant now we view him, He shall fill his
5. All cre - a - tion, join in prais - ing God, the Fa - ther,

(D7)
Eb7

(G)
Ab

(Em) (B7)
Fm C7



1. all the earth; Ye who sang cre - a - tion's sto - ry,
2. flocks by night, God on earth is now re - sid - ing;
3. beam a - far; Seek the great De - sire of Na - tions,
4. Fa - ther's throne, Gath - er all the na - tions to him;
5. Spir - it, Son, Ev - er - more your voic - es rais - ing,

(Em)
Fm

(D/A)
Eb/Bb

(A7)
Bb7

(D)
Eb

(D)
Eb



1. Now pro - claim Mes - si - ah's birth: } Come and wor - ship,
2. Yon - der shines the ___ in - fant light: }
3. Ye have seen his ___ na - tal star: }
4. Ev - 'ry knee shall ___ then bow down: }
5. To the e - ter - nal ___ Three - in - One: }

(G)
Ab

(C)
Db

(Am)
Bbm

(Dsus4) (D)
Eb sus4 Eb

(G)
Ab



1-5. come and wor - ship, Wor - ship Christ, the new - born King.

Note: When guitar and keyboard play together, keyboardists should improvise using the guitar chords above the melody.

Text: 87 87 87; verses 1-3, James Montgomery, 1771-1854; verse 4, *Christmas Box*, 1825; verse 5, *Salisbury Hymn Book*, 1857.
Music: REGENT SQUARE; Henry T. Smart, 1813-1879; guitar acc. © 1995, 1997, OCP. All rights reserved.

ANGELS FROM THE REALMS OF GLORY

Capo 1: (G)

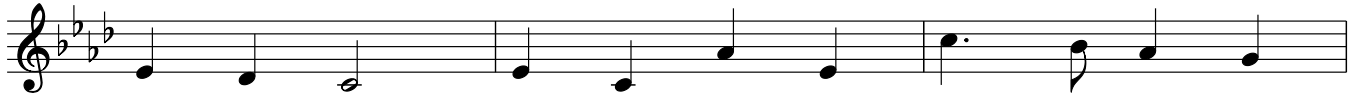


1. An - gels, from the realms of glo - ry, Wing your flight o'er
2. Shep - herds, in the fields a - bid - ing, Watch - ing o'er your
3. Sag - es, leave your con - tem - pla - tions, Bright - er vi - sions
4. Though an in - fant now we view him, He shall fill his
5. All cre - a - tion, join in prais - ing God, the Fa - ther,

(D7)
Eb7

(G)
Ab

(Em) (B7)
Fm C7



1. all the earth; Ye who sang cre - a - tion's sto - ry,
2. flocks by night, God on earth is now re - sid - ing;
3. beam a - far; Seek the great De - sire of Na - tions,
4. Fa - ther's throne, Gath - er all the na - tions to him;
5. Spir - it, Son, Ev - er - more your voic - es rais - ing,

(Em)
Fm

(D/A)
Eb/Bb

(A7)
Bb7

(D)
Eb

(D)
Eb



1. Now pro - claim Mes - si - ah's birth: } Come and wor - ship,
2. Yon - der shines the ___ in - fant light: }
3. Ye have seen his ___ na - tal star: }
4. Ev - 'ry knee shall ___ then bow down: }
5. To the e - ter - nal ___ Three - in - One: }

(G)
Ab

(C)
Db

(Am)
Bbm

(Dsus4) (D)
Eb sus4 Eb

(G)
Ab



1-5. come and wor - ship, Wor - ship Christ, the new - born King.

Note: When guitar and keyboard play together, keyboardists should improvise using the guitar chords above the melody.

Text: 87 87 87; verses 1-3, James Montgomery, 1771-1854; verse 4, *Christmas Box*, 1825; verse 5, *Salisbury Hymn Book*, 1857.
Music: REGENT SQUARE; Henry T. Smart, 1813-1879; guitar acc. © 1995, 1997, OCP. All rights reserved.

ANGELS FROM THE REALMS OF GLORY

TRUMPET in B \flat

The musical score for the Trumpet in B \flat part consists of three staves of music. The first staff begins with a treble clef, a key signature of one flat (B \flat), and a 4/4 time signature. The music starts with a half note G \flat (B \flat), followed by quarter notes A \flat and B \flat , and a dotted half note C \flat (D \flat). The second staff continues with quarter notes D \flat , E \flat , and F \flat , followed by a half note G \flat with an accent (>). The third staff has quarter notes A \flat , B \flat , and C \flat , followed by quarter notes D \flat , E \flat , and F \flat , and a dotted half note G \flat . The first staff is marked *mf* and the second staff is marked *f*. The second staff also features a dynamic change from *f* to *mf* and a fermata over the final note. The third staff is marked *f* and ends with a double bar line.

Music: REGENT SQUARE; Henry T. Smart, 1813–1879; arr. by Randall DeBruyn, b. 1947, © 1991, OCP. All rights reserved.