

# Now the Day Has Drawn to Ending

EAST FINCHLEY, 87 87  
Stephen Dean

INTRO (♩ = ca. 60)

Keyboard

Am7 G C/E C Em/B A7 G/D C/D D7 G

VERSES 1, 2, 4

Descant

Melody

4. Lov - ing Fa - ther, Je - sus

1. Now the day has drawn to end - ing, And we look up - on the  
2. In the dark - ness that comes near us, Give us calm and qui - et

4. Lov - ing Fa - ther and Cre - a - tor, Je - sus Christ, who walked our

G/B G Am Dm7 Am D7/A

4. Christ, Ho - ly Spir - it, be - with us till

1. night; Hear, O God, our glad thanks - giv - ing For the  
2. sleep; Guard us safe from ev - ery dan - ger, Lov - ing  
4. way; Ho - ly Spir - it, friend and com - fort - er, Be with

Bm Am7 G C/E C Em/B A7

© 2006, Stephen Dean. Published by OCP, 5536 NE Hassalo, Portland, OR 97213. All rights reserved.

\*Alternative text when sung after dark.

NOW THE DAY HAS DRAWN TO ENDING (Keyboard/Choral), cont. (2)

<p>4. break of _____ 4. day.</p>	<p>1, 2 1: D.S. 2: to Verse 3</p>	<p>Final <i>molto rall.</i> Fine</p>
<p>1. bless - ings _____ of the light. 2. shep - herd _____ of the sheep. 4. us till the break of _____ 4. day.</p>	<p>1, 2 1: D.S. 2: to Verse 3</p>	<p>Final <i>molto rall.</i> Fine</p>
	<p>1, 2 1: D.S. 2: to Verse 3</p>	<p>Final G G maj7 Cadd9 D7 G <i>sub. p</i> <i>molto rall.</i> Fine</p>

VERSE 3: *a cappella*

Soprano

Alto

Tenor

Bass

3. Ev - ery day brings joy and sor - row, Times to dance and times to mourn; \_\_\_\_\_

3. May we rise re - freshed to - mor - row, Fit to work for your king - dom's dawn.

D.S.

# Now the Day Has Drawn to Ending

(Guitar/Vocal)

EAST FINCHLEY, 87 87

Stephen Dean

## INTRO (♩ = ca. 60)

Am7 G C/E C Em/B A7 G/D C/D D7 G

(Keyboard)

## VERSES (Guitar accompaniment tacet Verse 3 when choir sings *a cappella*)

G/B G Am Dm7 Am D7/A

1. Now the day has drawn to end - ing, And we look up - on the
2. In the dark - ness that comes near us, Give us calm and qui - et
- \*(sur - rounds)
3. Ev - ery day brings joy and sor - row, Times to dance and times to
4. Lov - ing Fa - ther and Cre - a - tor, Je - sus Christ, who walked our

Bm Am7 G C/E C Em/B A7

1. night; Hear, O God, our glad thanks - giv - ing For the
2. sleep; Guard us safe from ev - ery dan - ger, Lov - ing
3. mourn; May we rise re - freshed to - mor - row, Fit to
4. way; Ho - ly Spir - it, friend and com - fort - er, Be with

G/D C/D D7

1-3 G	Final G Gmaj7 Cadd9 D7 G
----------	-----------------------------

*D.S.* *sub. p* *molto rall.*

1. bless - ings\_\_\_ of the light.
2. shep - herd\_\_\_ of the sheep.
3. work for your king - dom's dawn.
4. us till the break of 4. day.\_\_\_\_\_

© 2006, Stephen Dean. Published by OCP, 5536 NE Hassalo, Portland, OR 97213. All rights reserved.

\*Alternative text when sung after dark.

# Now the Day Has Drawn to Ending

EAST FINCHLEY, 87 87  
Stephen Dean

SOLO INSTRUMENT

INTRO ( $\text{♩} = \text{ca. } 60$ )



VERSE 1



1. light. 2. In the dark -

VERSE 2



3. dawn. 4. Lov-ing

VERSE 3



Fa -



# Now the Day Has Drawn to Ending

CLARINET in B $\flat$

EAST FINCHLEY, 87 87  
Stephen Dean

INTRO ( $\text{♩} = \text{ca. } 60$ )



VERSE 1

VERSE 2

VERSE 3



2. shep-herd of the sheep.



VERSE 4



## Assembly Edition

### NOW THE DAY HAS DRAWN TO ENDING

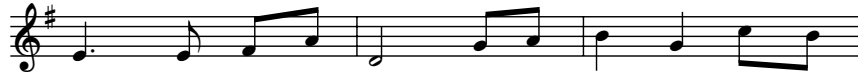
EAST FINCHLEY



1. Now the day has drawn to end - ing, And we  
2. In the dark - ness that comes near us, Give us

*\*(sur - rounds)*

3. Ev - ery day brings joy and sor - row, Times to  
4. Lov - ing Fa - ther and Cre - a - tor, Je - sus



1. look up - on the night; Hear, O God, our glad thanks -

2. calm and qui - et sleep; Guard us safe from ev - ery

3. dance and times to mourn; May we rise re - freshed to -

4. Christ, who walked our way; Ho - ly Spir - it, friend and



1. giv - ing For the bless - ings \_\_\_ of the light.

2. dan - ger, Lov - ing shep - herd \_\_\_ of the sheep.

3. mor - row, Fit to work for your king - dom's dawn.

4. com - fort - er, Be with us till the break of day.

\*Alternative text

Text: 87 87. Text and music © 2006, Stephen Dean.  
Published by OCP, 5536 NE Hassalo, Portland, OR 97213. All rights reserved.

We are pleased to grant permission to reprint the assembly edition enclosed in the box at no charge for the special celebrations of ordination, religious profession, first Mass or funeral. Reprints must include title, composer's name and full copyright notice as it appears above. If not kept as a souvenir, copies must be destroyed after use. For all other uses please contact: OCP Reprint Permission, 1-800-LITURGY.

## Composer Notes

### Now the Day Has Drawn to Ending

This piece had an unusual genesis. It was written as a demonstration of the power of human memory, for a parish workshop in East Finchley, North London. I first got people to repeat the words of the first verse; then sang them the tune and got them to repeat it; and finally put the two together. As expected, it is much easier to remember the words when you have a tune to sing them to; and it showed the participants, many of them elderly, that you can commit something to memory quite quickly, a phenomenon known to some as “the publisher’s nightmare.” The hymn was then sung at Evening Prayer, with the people, at last, being given the whole text.

The further you live from the equator, the greater the time of sunset will vary. The original words of stanza two, line one, were “in the darkness that surrounds us.” They can be substituted if it is appropriate.

—Stephen Dean