

We Belong to You

Edition # 20188-Z1

to the Faculty, Students and Alumni of Loyola Marymount University, Los Angeles, California

Words by Victoria Thomson

Music by Trevor Thomson

INTRO *Flowing* (♩ = ca. 100)

Musical notation for the intro, featuring a piano accompaniment in 4/4 time. The key signature has one flat (B-flat). The tempo is marked as 'Flowing' with a quarter note equal to approximately 100 beats per minute. The notation includes a treble clef and a bass clef. The melody in the treble clef consists of eighth and quarter notes. The bass line in the bass clef consists of quarter and eighth notes. Chord symbols are placed above the treble staff: Dm, C/E, F, C, Bb, F, C.

Musical notation for the first line of the song, featuring a piano accompaniment and a vocal line. The piano accompaniment is in 4/4 time with a key signature of one flat. The vocal line is in the treble clef. The piano accompaniment includes a treble clef and a bass clef. Chord symbols are placed above the piano staff: Dm, C/E, F, Am7, G(no3), Bb, F/Bb, C, Fsus4, F. The vocal line has a rest for the first four measures, followed by the lyrics 'We be -' in the fifth measure.

Text © 2006, Victoria Thomson. Music © 2006, Trevor Thomson.
Published by spiritandsong.com®, a division of OCP, 5536 NE Hassalo, Portland, OR 97213. All rights reserved.

REFRAIN

long to you, O Lord of our long - ing, We be - long to you. In our

Dm C/E F C Bb F C

dai - ly liv - ing, dy - ing and ris - ing We be - long to you. to Verses

Dm C/E F Am7 G(no3) Bb F/Bb C Fsus4 F to Verses

Last time

We be - long to you. We be - long to you. *Fine*

Last time

Bb F/Bb C Fsus4 F Bb F/Bb C F *Fine*

VERSES



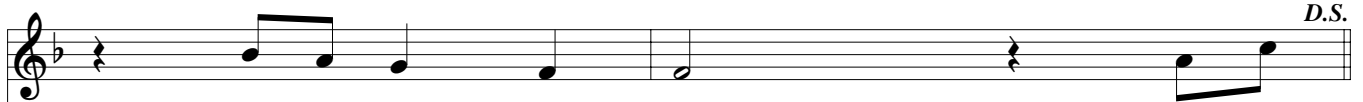
1. In the wa - ters of your mer - cy,	γ When the old be - comes the
2. Filled with gifts and filled with good - ness,	γ Spir - it breath - ing life in -
3. When we share the bread you've bro - ken	γ With the man - y and the
4. We are called to share your word, Lord,	In all we say and all we

Dm F Bb F Dm Dm/C



1. new, _____	Souls u - nit - ed in the	mys - t'ry:
2. to _____	All who seek to find their	pur - pose:
3. few, _____	We are blessed and we are	bro - ken;
4. do. _____	As our jour - ney moves us	on - ward,

Bb F Dm F Bb F/A



1-4. We be - long to you. We be -

Gm C Fsus4 F D.S.

