

# O Silence

Genevieve Glen, OSB

John Foley, S.J.  
UNHEARD, LM

**INTRO** *Quiet, not too slow* (♩ = 50)

Keyboard

*p*

B $\flat$  Gm C Am D

## VERSE 1

Baritone section *p*

1. O Si - lence so - no - rous with Word,

Dm A Dm A/E Dm/F A7(#5) Dm

1. O Breath un - seen of Love un - heard,

B $\flat$  F C F F/E G/D Em A

1. O un - con - sum - ing Fire, dark Light,

D B $\flat$  Am/C Am7/E Dm/F G C

*rit.*

1. We wor - ship at the edge of night.

A B $\flat$  Gm C Am D

*rit.*

## VERSE 2

Soprano *a tempo*

Alto

2. O God be - yond all speech or thought,

Dm A Dm A/E Dm/F A7(#5) Dm

*a tempo*

2. O God in song half - hid, half - caught,

B $\flat$  F C F F/E G/D Em A

2. O God for hu - man mind too much,

D B $\flat$  Am/C Am7/E Dm/F G C

*rit.*

2. In crib and cross and bread we touch.

A B $\flat$  Gm C Am D

*rit.*

Detailed description: This system contains the second system of music. It includes a vocal line with lyrics '2. In crib and cross and bread we touch.' and a piano accompaniment. The piano part has a 'rit.' marking. Chords A, B-flat, Gm, C, Am, and D are indicated above the piano staff.

VERSE 3

S *a tempo*

3. O time - less One in maj - es - ty,

B *a tempo*

Dm A Dm A/E Dm/F A7(#5) Dm

*a tempo*

Detailed description: This system contains the first part of Verse 3. It includes a vocal line with lyrics '3. O time - less One in maj - es - ty,' and a piano accompaniment. The piano part has an 'a tempo' marking. Chords Dm, A, Dm, A/E, Dm/F, A7(#5), and Dm are indicated above the piano staff.

3. O in - di - vis - i - ble yet Three,

B $\flat$  F C F F/E G/D Em A

Detailed description: This system contains the second part of Verse 3. It includes a vocal line with lyrics '3. O in - di - vis - i - ble yet Three,' and a piano accompaniment. Chords B-flat, F, C, F, F/E, G/D, Em, and A are indicated above the piano staff.

3. O Source and Sab - bath of our days,

D B $\flat$  Am/C Am7/E Dm/F G C

This system contains the first two staves of music. The top staff is a vocal line with lyrics. The bottom staff is a piano accompaniment with chords labeled above it: D, B $\flat$ , Am/C, Am7/E, Dm/F, G, and C.

3. Ac - cept, ac - cept our stam - mered praise.

*rit.*

A B $\flat$  Gm C Am D

*rit.*

This system contains the next two staves of music. The top staff is a vocal line with lyrics and a *rit.* marking above the final measure. The bottom staff is a piano accompaniment with chords labeled above it: A, B $\flat$ , Gm, C, Am, and D. A *rit.* marking is also present below the piano staff.

# O Silence

(Guitar/Vocal)

Genevieve Glen, OSB

John Foley, S.J.  
UNHEARD, LM

**INTRO** *Quiet, not too slow* (♩ = 50)

**VERSES**

B♭ Gm C Am D (a tempo) Dm A Dm A/E

(Keyboard)

1. O Si - lence so - no -
2. O God be - yond all
3. O time - less One in

Dm/F A7(#5) Dm B♭ F C F F/E G/D Em

1. rous with Word, O Breath un - seen of Love un -
2. speech or thought, O God in song half - hid, half -
3. maj - es - ty, O in - di - vis - i - ble yet

A D B♭ Am/C Am7/E Dm/F G C

1. heard, O un - con - sum - ing Fire, dark Light,
2. caught, O God for hu - man mind too much,
3. Three, O Source and Sab - bath of our days,

A B♭ Gm C Am 1, 2  
D Final  
D

*rit.* *D.S.*

1. We wor - ship at the edge of night.
2. In crib and cross and bread we touch.
3. Ac - cept, ac - cept our stam - mered praise. \_\_\_\_\_

## Composer's Notes

*O Silence* is a contemplation of the mysterious, transcendental God who yet touches us intimately. Benedictine Sister Genevieve Glen's text uses paradoxical metaphors to express this: silence which somehow is filled with word and song, fire which does not burn things up, light which is also dark. My musical setting is very simple, reflecting this mystery. It can be used for prayer services, Benediction, adoration of the Blessed Sacrament, Evening Prayer, reconciliation services, Masses during Advent or especially Lent, and also during retreats. Adding the oboe brings a still deeper dimension to the piece.

—*John Foley, S.J.*  
*Saint Louis University*

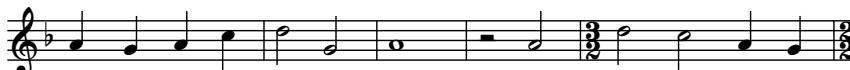
## Assembly Edition

### O SILENCE

John Foley, S.J.



1. O Si - lence so - no - rous with Word, O  
 2. O God be - yond all speech or thought, O  
 3. O time - less One in maj - es - ty, O



1. Breath un - seen of Love un - heard, O un - con - sum - ing  
 2. God in song half - hid, half - caught, O God for hu - man  
 3. in - di - vis - i - ble yet Three, O Source and Sab - bath



1. Fire, dark Light, We wor - ship at the edge of night.  
 2. mind too much, In crib and cross and bread we touch.  
 3. of our days, Ac - cept, ac - cept our stam - mered praise.

Text: LM; Genevieve Glen, OSB, © 1998, Benedictine Nuns of the Abbey of St. Walburga.  
 Published by OCP Publications. All rights reserved. Music: UNHEARD, © 2005, John B. Foley, S. J.  
 Published by OCP Publications, 5536 NE Hassalo, Portland, OR 97213. All rights reserved.

We are pleased to grant permission to reprint the assembly edition enclosed in the box at no charge for the special celebrations of ordination, religious profession, first Mass or funeral. Reprints must include title, composer's name and full copyright notice as it appears above. If not kept as a souvenir, copies must be destroyed after use. For all other uses please contact: OCP Reprint Permission, 1-800-LITURGY.