

When Signs of This World's Anguish

KING'S LYNN, alt.
76 76 D

Genevieve Glen, OSB

Arranged by Kevin Keil, ASCAP

INTRO *With longing* (♩ = ca. 80)

Oboe *mp* *poco rit.*

Soprano/
Alto *poco rit.* Solo or All *mp*

Piano *mp* *poco rit.*

1. When

VERSE 1

5 *a tempo*

a tempo

1. signs of this world's an - guish So — pierce the hu - man heart,

Baritone Solo or All *mp*

1. How —

a tempo

Text © 2002, Benedictine Nuns of the Abbey of St. Walburga. Music arrangement © 2005, Kevin Keil.
Published by OCP, 5536 NE Hassalo, Portland OR 97213. All rights reserved.

9

S/A *mf*

1. You —

1. can we think you — heed - less, Too ho - ly to take part?

cresc. *mf*

13

dim. *mp*

1. weep at friend-ship's grave - side; You grieve the hard — ca - price That

mp

1. That

dim. *mp*

17

S/A

1. seals your an-cient cit - y A - gainst your prof-fered peace.

1. seals your an-cient cit - y A - gainst your peace.

Detailed description: This system contains the first musical system. It features a vocal line (S/A) and a piano accompaniment. The vocal line has two parts: the first part is for Soprano/Alto (S/A) and the second part is for Bass. The lyrics are: "1. seals your an-cient cit - y A - gainst your prof-fered peace." and "1. seals your an-cient cit - y A - gainst your peace." The piano accompaniment consists of a right-hand melody and a left-hand bass line.

VERSE 2

22

2. You dwell on high, ex - alt - ed, In glo - ry's blaz - ing

Melody

Detailed description: This system contains the second musical system, labeled "VERSE 2" and starting at measure 22. It features a vocal line and a piano accompaniment. The vocal line has two parts: the first part is for Soprano/Alto (S/A) and the second part is for Bass. The lyrics are: "2. You dwell on high, ex - alt - ed, In glo - ry's blaz - ing". The piano accompaniment consists of a right-hand melody and a left-hand bass line. The word "Melody" is written above the bass line.

25

2. light, Though hid in clouds and dark - ness From daz - zled hu - man

29

Melody

f

2. sight. Yet with the bro - ken - heart - ed You al - so choose to

f

33

2. And_ set them

dim. *mp*

S
A

2. be. You raised the crushed of spir - it, And_ set the bur - dened

Melody

dim. *mp*

37

poco rit.

2. free.

poco rit.

2. free.

poco rit.

poco rit.

VERSE 3

41 *a tempo*

3. Ah

mp a tempo

3. You touch the crust - ed lep - er; We draw our robes a -

mp a tempo

8va loco *8va loco* *8va loco*

mp a tempo

44

3. Ah Ah Ah

3. side. You break your bread with out - casts; We shun them in our

8va loco *8va loco* *8va loco*

48

3. — You bleed, You bleed, For - giv - ing ev - ery

3. pride. You — bleed from nails we — ham - mer, For - giv - ing ev - ery

8va loco *8va loco*

52

3. thrust — Be - fore this Face of mer - cy, less - er gods are

3. thrust — Be - fore this Face of mer - cy, All — less - er gods are

Melody

dim. *8va loco* *8va loco* *8va loco*

56

molto rit.

3. dust!

molto rit.

3. dust!

molto rit.

molto rit.

8vb

Detailed description: This page of a musical score, numbered 56, features four staves. The top staff is a vocal line in G major (one flat) with a melodic line starting on a dotted half note. The second and third staves are vocal lines with lyrics '3. dust!' and rests. The fourth staff is a piano accompaniment with chords and a moving bass line. The tempo marking 'molto rit.' is placed above the first three staves and below the piano accompaniment. The page ends with a double bar line and the instruction '8vb'.

When Signs of This World's Anguish

KING'S LYNN, alt.
76 76 D

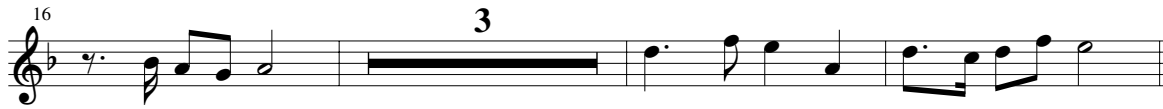
OBOE

Arranged by Kevin Keil, ASCAP

INTRO *With longing* (♩ = ca. 80)



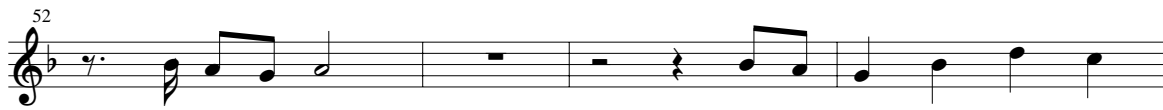
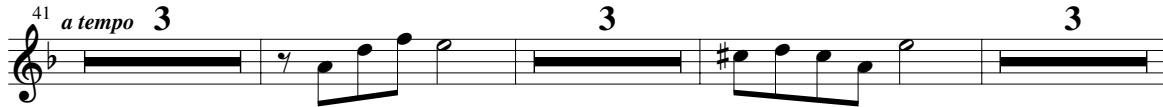
VERSE 1



VERSE 2



VERSE 3



When Signs of This World's Anguish

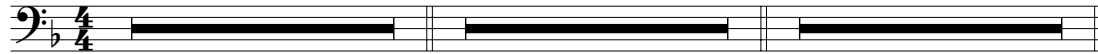
11

KING'S LYNN, alt.
76 76 D

TIMPANI

Arranged by Kevin Keil, ASCAP

INTRO *With longing* (♩ = ca. 80) **4** **VERSE 1** **5** **17** **VERSE 2** **22** **19**



VERSE 3
41 **5**



pp a tempo

52 *tr*



pp *molto rit.*

Music arrangement © 2005, Kevin Keil. Published by OCP, 5536 NE Hassalo, Portland OR 97213. All rights reserved.

Assembly Edition

WHEN SIGNS OF THIS WORLD'S ANGUISH

KING'S LYNN, alt.



1. When signs of this world's an - guish So pierce the hu - man
2. You dwell on high, ex - alt - ed, In glo - ry's blaz - ing
3. You touch the crust - ed lep - er; We draw our robes a -

1. heart, How can we think you heed - less, Too
2. light, Though hid in clouds and dark - ness From
3. side. You break your bread with out - casts; We

1. ho - ly to take part? You weep at friend - ship's
2. daz - zled hu - man sight. Yet with the bro - ken -
3. shun them in our pride. You bleed from nails we

1. grave - side; You grieve the hard ca - price That seals your
2. heart - ed You al - so choose to be. You raised the
3. ham - mer, For - giv - ing ev - ery thrust— Be - fore this

1. an - cient cit - y A - gainst your prof - fered peace.
2. crushed of spir - it, And set the bur - dened free.
3. Face of mer - cy, All less - er gods are dust!

Text: 76 76 D; Genevieve Glen, OSB, © 2002, Benedictine Nuns of the Abbey of St. Walburga.
Music arrangement © 2005, Kevin Keil. Published by OCP, 5536 NE Hassalo, Portland, OR 97223. All rights reserved.

We are pleased to grant permission to reprint the assembly edition enclosed in the box at no charge for the special celebrations of ordination, religious profession, first Mass or funeral. Reprints must include title, composer's name and full copyright notice as it appears above. If not kept as a souvenir, copies must be destroyed after use. For all other uses please contact: OCP Reprint Permission, 1-800-LITURGY.