

Now Is the Acceptable Time

Based on Joel 2:12–13;
2 Corinthians 5:20–6:2;
Matthew 6:1–4

Barbara Bridge
Arranged by Craig S. Kingsbury

INTRO (♩ = ca. 88)

Keyboard

B \flat Dm E \flat Fsus4 F

B \flat B \flat /D E \flat Cm Fsus4 F Gm Cm Fsus4 F B \flat

REFRAIN

Descant

Now is the time, _____ the ac-cept-a-ble time, _____ the

Soprano

of sal -

Now _____ is the ac-cept-a-ble time. _____ Now is the day of sal -

Tenor

Bass

B \flat Dm E \flat Fsus4 F B \flat Gm

day of sal - va - tion. We be - come God's ho - li - ness. —

va - tion. Be

va - tion. We are called to be - come the ho - li - ness of God. — Be

Cm F Gm Ab/Eb Bb7/F Eb Cm Fsus4 F

Be rec - on - ciled. Grace of God.

re - con - ciled with God now! —

re - con - ciled with God now! Re - ceive the grace of God.

Bb Bb/D Eb Cm Fsus4 F Gm Cm Fsus4 F Bb

Fine

Fine

Fine

VERSES

S/A

1. Break o - pen your hearts of stone. Re - turn to the Lord with your
 2. Keep se - cret your deeds of love and cheer - ful - ly give to the
 3. With fast - ing and con - stant prayer, strength - en your - selves on the

T/B

Gm Dm Eb F Bb Cm Dm

1. whole heart! God's mer - cy a - waits us all:
 2. need - y. God's bless - ing is ours to share:
 3. jour - ney. God walks with us day by day:

Eb F Gm Dm Eb F Gm

1-3. God is gra - cious, rich in kind - ness.

Ab Eb Cm7 Fsus4 F Fsus2 F D.S.

Now Is the Acceptable Time

(Guitar/Vocal)

Based on Joel 2:12–13;
2 Corinthians 5:20—6:2;
Matthew 6:1–4

Barbara Bridge

INTRO (♩ = ca. 88)

Capo 3: (G) (Bm) (C) (Dsus4)(D) (G) (G/B) (C) (Am) (Dsus4) (D) (Em) (Am)
B♭ Dm E♭ Fsus4 F B♭ B♭/D E♭ Cm Fsus4 F Gm Cm



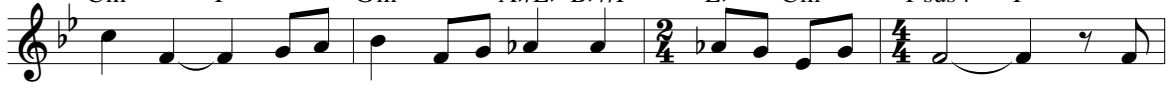
REFRAIN

(Dsus4) (D) (G) (G) (Bm) (C) (Dsus4)(D) (G) (Em) (Am)
Fsus4 F B♭ B♭ Dm E♭ Fsus4 F B♭ Gm



Now _____ is the ac - cept-a - ble time. _____ Now is the day of sal -

(Am) (D) (Em) (F/C) (G7/D) (C) (Am) (Dsus4) (D)
Cm F Gm A♭/E♭ B♭7/F E♭ Cm Fsus4 F



va - tion. _____ We are called to be - come the ho - li - ness of God. _____ Be

(G) (G/B) (C) (Am) (Dsus4) (D) (Em) (Am) (Dsus4) (D) (G)
B♭ B♭/D E♭ Cm Fsus4 F Gm Cm Fsus4 F B♭ *Fine*



rec - on - ciled with God now! _____ Re - ceive the grace _____ of God.

VERSES

(Em) (Bm) (C) (D) (G) (Am) (Bm)
Gm Dm E♭ F B♭ Cm Dm



1. Break o - pen your hearts of stone. _____ Re - turn to the Lord _____ with your
2. Keep se - cret your deeds of love _____ and cheer - ful - ly give _____ to the
3. With fast - ing and con - stant prayer, _____ strength - en your - selves _____ on the

(C) (D) (Em) (Bm) (C) (D) (Em)
E♭ F Gm Dm E♭ F Gm



1. whole heart! God's mer - cy a - waits us all:
2. need - y. God's bless - ing is ours to share:
3. jour - ney. God walks with us day by day:

(F) (C) (Am7) (Dsus4) (D) (Dsus2) (D)
A♭ E♭ Cm7 Fsus4 F Fsus2 F *D.S.*



- 1-3. God is gra - cious, rich in kind - ness. _____

Now Is the Acceptable Time

Barbara Bridge

B \flat TRUMPET

Arranged by Craig S. Kingsbury

INTRO (♩ = ca. 88)

REFRAIN: Tacet until after Verse 2

6

VERSES 1-3: Tacet Verses 1 & 3

© 2003, Barbara Bridge. Published by OCP Publications, 5536 NE Hassalo, Portland, OR 97213. All rights reserved.

Assembly Edition

NOW IS THE ACCEPTABLE TIME

Barbara Bridge

Refrain

Now is the ac - cept - a - ble time. Now is the day of sal -

va - tion. We are called to be - come the ho - li - ness of God. Be

re - on - ciled with God now! Re - ceive the grace of God.

Verses

1. Break o - pen your hearts of stone. — Re - turn to the Lord
 2. Keep se - cret your deeds of love — and cheer - ful - ly give
 3. With fast - ing and con - stant prayer, — strength - en your - selves

1. with your whole heart! God's mer - cy a - waits us all;
 2. to the need - y. God's bless - ing is ours to share;
 3. on the jour - ney. God walks with us day by day;

1-3. God is gra - cious, rich in kind - ness.

to Refrain

Text: Based on Joel 2:12-13; 2 Corinthians 5:20-6:2; Matthew 6:1-4.
 Text and music © 2003, Barbara Bridge. Published by OCP Publications. All rights reserved.

We are pleased to grant permission to reprint the assembly edition enclosed in the box at no charge for the special celebrations of ordination, religious profession, first Mass or funeral. Reprints must include title, composer's name and full copyright notice as it appears above. If not kept as a souvenir, copies must be destroyed after use. For all other uses please contact: OCP Reprint Permission, 1-800-LITURGY.