

OCP Choral Series

The Eyes and Hands of Christ

for the 50th anniversary of the parish community of Christ the King, Kingston, Rhode Island

Assembly, SATB Choir, Keyboard, and Guitar

Tom Kendzia

INTRO *Easy, walking feel* (♩ = ca. 62)

Keyboard

REFRAIN

Soprano *mf*

Alto

Tenor

Bass *mf*

Where two or three are gath - ered in my name,

© 2001, Tom Kendzia. Published by OCP, 5536 NE Hassalo, Portland, OR 97213. All rights reserved.

From the collection CLOTHED IN LOVE Songbook #11473 Compact Disc #11475

MUSIC · WORSHIP · SERVICE

1.800.548.8749

ocp.org



love will be found, — life — will a - bound. —

Chords: A^b E^b B^b/D A^b/C A^b B^b A^b/C B^b/D

By name — we are called, — from wa - ter we are sent: —

Chords: E^b/G A^b B^b/A^b E^b/G F^m C^m/G $G7$ C^m C^m/B^b

last time to Coda ⊕

— to be - come — the eyes and hands of Christ.

Chords: A^b F^m/A^b E^b/B^b A^b/B^b B^b E^b E^b/G

last time to Coda ⊕

Ab Eb Ab/Eb Eb

VERSES 1, 2

1. One we be - come, no long - er stran - gers.
2. One in the Spir - it, one in the Lord.

Bb/D Cm Db

1. No long - er emp - ty or frail.
2. One in the break - ing of the bread.

Ab/C Cm Bb

1. Filled with the Spir - it, ev - 'ry hun - ger sat - is - fied.
2. Life - giv - ing wit - ness of our dy - ing and new life.

Bb/D Cm Db

D.S.

1. Christ is the cen - ter of our lives.
 2. Held by the prom - ise in our hands.

Fm Eb/G Ab Ab/Bb Eb *D.S.*

⊕ CODA

S
A
Christ.

T
B

Eb Eb/G Ab Ab/Bb Eb Eb/G Ab Ab/Bb

Eb Eb/G Ab Eb/G Fm Eb/G Ab Ab/Bb

Eb Eb/G Ab Ab/Bb Eb Eb/G Ab Ab/Bb

Cm Gm/Bb Ab Eb/G Fm Eb/G Ab Bb

VERSE 3

S *f*
A

3. Not what we are, but what we be - come.

T
B *f*
C C/E F F/A Eb/G Eb

3. Not what we say, but what we do.

Gm Bb C

Solo or Unison Choir

3. Liv - ing the chal - lenge as bear - ers of light.

C/E Dm Eb

Detailed description: This system contains a vocal line and piano accompaniment. The vocal line is on a single staff with a treble clef and a key signature of one flat (Bb). The lyrics are "3. Liv - ing the chal - lenge as bear - ers of light." The piano accompaniment consists of two staves (treble and bass clefs). The treble staff has a key signature of one flat and contains chords and moving lines. The bass staff has a key signature of one flat and contains a simple bass line. Chord symbols C/E, Dm, and Eb are placed above the treble staff.

FINAL REFRAIN

All S *f*
A
3. We are the eyes and hands of Christ. Where two or

T B *f*
Gm F/A Bb Bb/C C7 F Bb/C

Detailed description: This system is the beginning of the final refrain. It features a vocal line and piano accompaniment. The vocal line is on a single staff with a treble clef and a key signature of one flat. It includes vocal parts for Soprano (S), Alto (A), Tenor (T), and Bass (B). The lyrics are "3. We are the eyes and hands of Christ. Where two or". The piano accompaniment consists of two staves (treble and bass clefs). The treble staff has a key signature of one flat and contains chords and moving lines. The bass staff has a key signature of one flat and contains a simple bass line. Chord symbols Gm, F/A, Bb, Bb/C, C7, F, and Bb/C are placed above the treble staff. The word "FINAL REFRAIN" is written in bold above the vocal staff.

three are gath - ered in my name, love will be

F F/A Bb F F/A Bb

Detailed description: This system continues the final refrain. It features a vocal line and piano accompaniment. The vocal line is on a single staff with a treble clef and a key signature of one flat. The lyrics are "three are gath - ered in my name, love will be". The piano accompaniment consists of two staves (treble and bass clefs). The treble staff has a key signature of one flat and contains chords and moving lines. The bass staff has a key signature of one flat and contains a simple bass line. Chord symbols F, F/A, Bb, F, F/A, and Bb are placed above the treble staff.

found, life will a - bound. By

F C/E Bb/D Bb C Bb/D C/E F/A

This system contains the first two staves of music. The top staff is the vocal line with lyrics: "found, life will a - bound. By". The bottom staff is the piano accompaniment, with chords labeled: F, C/E, Bb/D, Bb, C, Bb/D, C/E, F/A.

name we are called, from wa - ter we are sent:

Bb C/Bb F/A Gm Asus4 A7 Dm Dm/C

This system contains the second two staves of music. The top staff is the vocal line with lyrics: "name we are called, from wa - ter we are sent:". The bottom staff is the piano accompaniment, with chords labeled: Bb, C/Bb, F/A, Gm, Asus4, A7, Dm, Dm/C.

to be - come the eyes and hands of Christ,

B \flat F/C B \flat /C C F F/A

Detailed description: This system contains the first six measures of the piece. It features a vocal line with lyrics, a piano accompaniment, and a chord progression. The key signature has one flat (B-flat major). The piano part includes a melodic line in the right hand and a harmonic line in the left hand. The lyrics are: "to be - come the eyes and hands of Christ,".

to be - come the eyes and hands of Christ.

rit.

B \flat F/C B \flat /C C F

rit.

Detailed description: This system contains the next six measures. The lyrics continue: "to be - come the eyes and hands of Christ." The tempo marking *rit.* (ritardando) is placed above the vocal line and below the piano accompaniment. The chord progression is B-flat, F/C, B-flat/C, C, and F. The piano part features a melodic line in the right hand and a harmonic line in the left hand.

broader

F/A B \flat F/A Gm7 C7 F

Detailed description: This system contains the final six measures. The lyrics are "broader". The tempo marking *rit.* is present. The chord progression is F/A, B-flat, F/A, Gm7, C7, and F. The piano part features a melodic line in the right hand and a harmonic line in the left hand. The system concludes with a double bar line.

The Eyes and Hands of Christ

(Guitar/Vocal)

for the 50th anniversary of the parish community of Christ the King, Kingston, Rhode Island

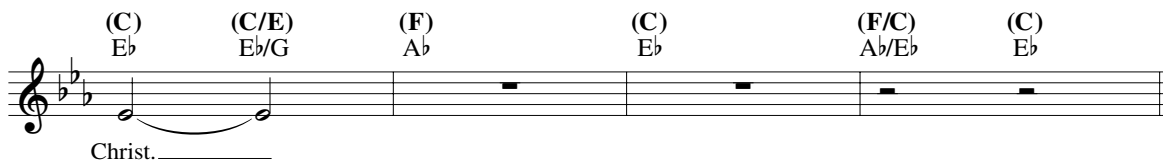
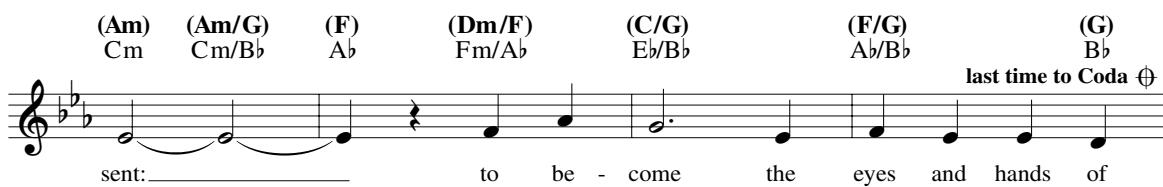
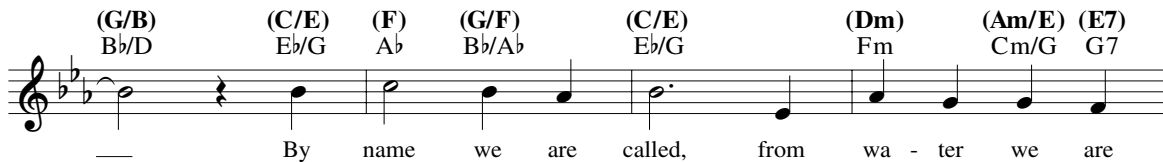
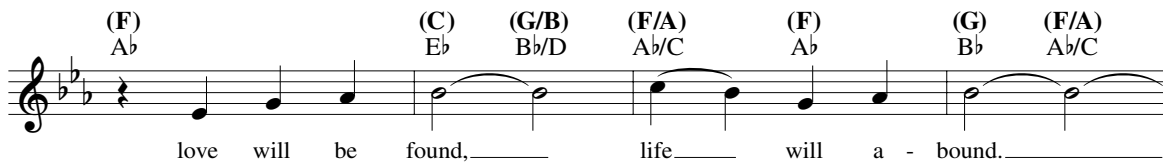
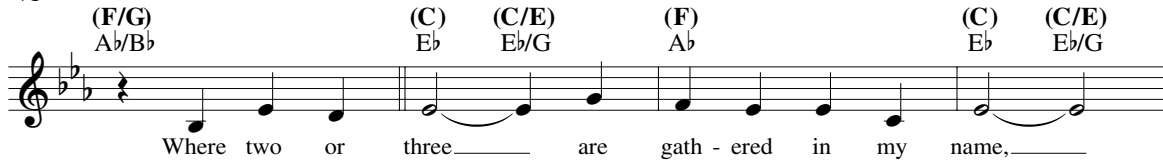
Tom Kendzia

INTRO Easy, walking feel (♩ = ca. 62)

Capo 3: (C) (C/E) (F) (F/G) (C) (C/E)
 Eb Eb/G Ab Ab/Bb Eb Eb/G



REFRAIN



VERSES 1, 2

(G/B) (Am) (Bb) (F/A)
Bb/D Cm Db Ab/C

1. One we be - come no long - er stran - gers. No long - er
2. One in the Spir - it, one in the Lord. One in the

(Am) (G) (G/B) (Am)
Cm Bb Bb/D Cm

1. emp - ty or frail. Filled with the Spir - it, ev - 'ry
2. break - ing of the bread. Life - giv - ing wit - ness of our

(Bb) (Dm7) (C/E) (F) (F/G) (C)
Db Fm7 Eb/G Ab Ab/Bb Eb D.S.

1. hun - ger sat - is - fied. Christ is the cen - ter of our lives.
2. dy - ing and new life. Held by the prom - ise in our hands.

⊕ CODA

(C) (C/E) (F) (F/G) (C) (C/E) (F) (F/G)
Eb Eb/G Ab Ab/Bb Eb Eb/G Ab Ab/Bb

Christ.
(*Instrumental solo)

(C) (C/E) (F) (C/E) (Dm) (C/E) (F) (F/G)
Eb Eb/G Ab Eb/G Fm Eb/G Ab Ab/Bb

(C) (C/E) (F) (F/G) (C) (C/E) (F) (F/G)
Eb Eb/G Ab Ab/Bb Eb Eb/G Ab Ab/Bb

(Am) (Em/G) (F) (C/E) (Dm) (C/E) (F) (G)
Cm Gm/Bb Ab Eb/G Fm Eb/G Ab Bb

* Cello or C Instrument solo as recorded, edition 11475.

VERSE 3

(A) (A/C#) (D) (D/F#) (C/E) (C) (Em)
C C/E F F/A Eb/G Eb Gm

3. Not what we are, _____ but what we be - come. Not what we

(G) (A) (A/C#) (Bm)
Bb C C/E Dm

Solo or Unison Choir

3. say, but what we do. _____ Liv - ing the chal - lenge as

(C) (Em) (D/F#) (G) (G/A) (A7) (D)
Eb Gm F/A Bb Bb/C C7 F

All *f*

3. bear - ers of light. We are the eyes and hands of Christ.

FINAL REFRAIN

(G/A) (D) (D/F#) (G) (D) (D/F#) (G)
Bb/C F F/A Bb F F/A Bb

Where two or three _____ are gath - ered in my name, _____ love will be

(D) (A/C#) (G/B) (G) (A) (G/B) (A/C#) (D/F#) (G) (A/G)
F C/E Bb/D Bb C Bb/D C/E F/A Bb C/Bb

found, _____ life _____ will a - bound. _____ By name we are

(D/F#) (Em) (F#sus4) (F#7) (Bm) (Bm/A) (G) (D/A)
F/A Gm Asus4 A7 Dm Dm/C Bb F/C

called, from wa - ter we are sent: _____ to be - come the

(G/A) (A) (D) (D/F#) (G) (D/A) (G/A) (A)
Bb/C C F F/A Bb F/C *rit.* Bb/C C

eyes and hands of Christ, _____ to be - come the eyes and hands of

(D) (D/F#) (G) (D/F#) (Em7) (A7) (D)
F F/A Bb F/A Gm7 C7 F

broader

Christ. _____

THE EYES AND HANDS OF CHRIST

Tom Kendzia

Refrain

Where two or three are gath-ered in my name
love will be found, life will a - bound.
By name we are called, from wa - ter we are sent:
to be - come the eyes and hands of Christ

3 to Verse 3 Final 15

© 2001, Tom Kendzia. Published by OCP, 5536 NE Hassalo, Portland, OR 97213. All rights reserved.

THE EYES AND HANDS OF CHRIST (Continued)

Verses 1, 2

1. One we be-come no long-er stran-gers. No long-er One in the Spir-it one in the Lord.
2. emp-ty or frail. Filled with the Spir-it ev-'ry Life - giv - ing wit - ness of our

to Refrain

1. hun-ger sat - is - fied. Christ is the cen - ter of our lives.
2. dy - ing and new life. Held by the prom-ise in our hands.

Verse 3

3. Not what we are, but what we be - come. Not what we Liv - ing the chal-lenge as

3. bear - ers of light. We are the eyes and hands of Christ.

to Refrain

We are pleased to grant permission to reprint the assembly edition enclosed in the box at no charge for the special celebrations of ordination, religious profession, first Mass or funeral. Reprints must include title, composer's name and full copyright notice as it appears above. If not kept as a souvenir, copies must be destroyed after use. For all other uses please contact: OCP Reprint Permission, 1-800-LITURGY.